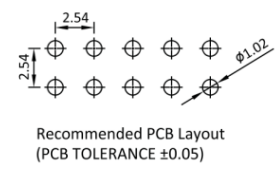
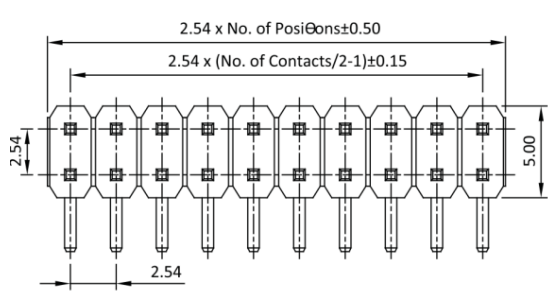
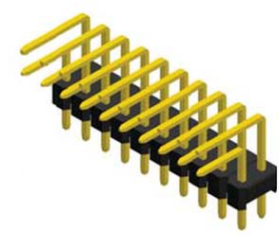


## Pin Header 2.54mm 2 Row H=1.7mm Right Angle Type



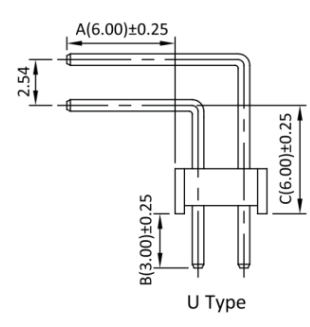
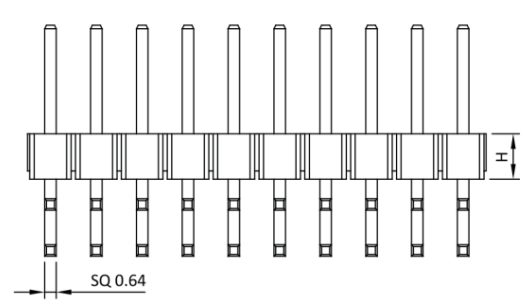
**Specifications**  
 Current Rate: 3 AMP  
 Insulation Resistance: 1000MΩ Min.  
 Contact Resistance: 20mΩ Max.  
 Dielectric Voltage: 1000V AC for one minute  
 Operation Temperature: -40°C to +105°C

**Material**  
 Insulator: Hi-Temp. Thermoplastic, UL 94V-0  
 Terminal: Copper Alloy  
 Plating: Gold Plated



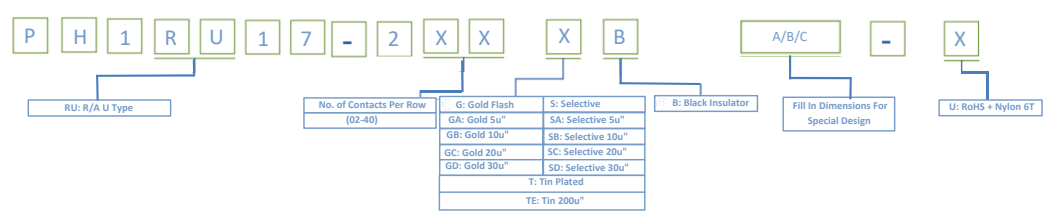
©: Standard Dimensions

Dimensions		
A	B	C
3.50	3.30	3.90
6.00	3.00	3.90
9.90	3.30	3.90



### ORDER INFORMATION

Part No.: PH1RU17-2XX-U



©: Standard Recommend

